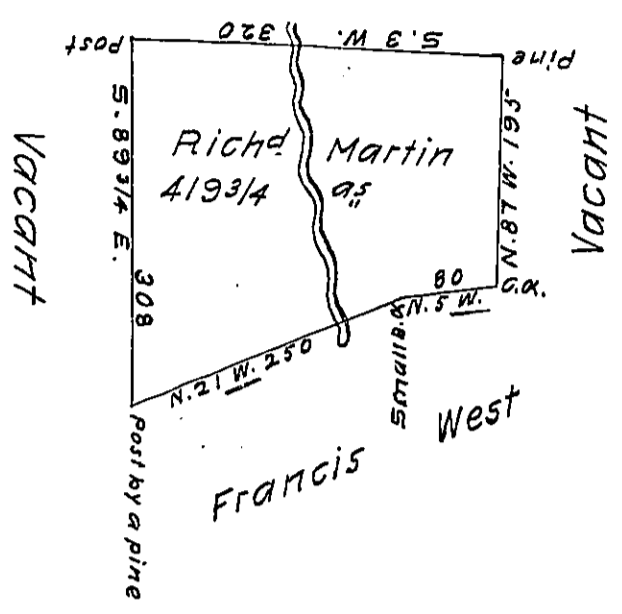


*J. 302*  
Sam! Lobdell



A draft of a tract of land called \_\_\_\_\_ situate upon the South branch of Shamokin Creek in the County of Northumb<sup>d</sup> containing four hundred & nineteen acres <sup>3</sup>/<sub>4</sub> surveyed for Richard Martin the 22<sup>rd</sup> day of February 1794 by virtue of a warrant dated the 22<sup>nd</sup> day of January 1794

by W<sup>m</sup> Gray D.S.

Daniel Brodhead Esq<sup>r</sup> }  
SURV<sup>r</sup> Gen<sup>l</sup>

IN TESTIMONY that the above is a copy of the original remaining on file in the Department of Internal Affairs of Pennsylvania, made conformably to an Act of Assembly approved the 16th day of February, 1833, I have hereunto set my Hand and caused the Seal of said Department to be affixed at Harrisburg, this twenty-seventh day of MARCH 1912

*Henry Howell*  
Secretary of Internal Affairs.